

**CREATIVE ARTS HIGH SCHOOL  
DEMOGRAPHIC AND ACADEMIC CHARACTERISTICS**

**Report Card Narratives**

**CREATIVE ARTS HIGH SCHOOL**

**1701 S. 6th STREET**

**CAMDEN, NEW JERSEY 08104**

*Phone No.: 856-966-8955/Fax No.: 856-964-9759*

**Dr. Davida Coe-Brockington, Principal**

***"THE ART OF LEARNING IS LEARNING THROUGH THE ARTS"***

The Creative Arts High School opened its doors on September 1999, with its first ninth grade class of 53. Our school is located at 1701 S. 6th Street in Camden, New Jersey. The mission of the Creative Arts High School is to provide compelling experiences and opportunities for the diverse Camden City population in order for them to be empowered in their pursuit of sustained academic excellence and cultural awareness through the arts. Our goal is to promote academic excellence and cultural awareness through the arts. Currently, we have a total of 180 students in grades 9-12. Our students have met and exceeded the district's and state's standards for attendance. Our students have been recognized for their academic and artistic achievement in the United States and abroad. Our students have been involved in a number of activities. The following is a listing of some of these events:

Channel Six (WPVI) Puerto- Rican Panorama	Alpha Kappa Alpha Sorority, Inc. (Oratorical Contest)
New Jersey Classroom Close-Up	Blackwood Elementary School's Cultural Jubilee 2000 Program
Shakespeare's, Romeo and Juliet	Dooley House Baby Supply Drive
Extras in the movie, Unbreakable	Mural Projects
Clean Communities Program	Holiday Singing at Cooper Hospital (Children's Wing)
The Census 2000 Program (Various New Jersey Malls)	Appel Farm
AIDS Coalition	Urban Promise
Camden City Senior Citizens, Christmas Program (Milandra Hall)	Shakespeare's Midsummers Night Dream
Performers and Ushers at the Ritz Theater	Purlie Victorious
Rutgers University, Girls In Mathematics and Science Program (GEMS)	Lorraine Hansbury's, A Raisin in the Sun
Rutgers University, Stedman Art Gallery	Shakespeare's Macbeth
Harlem Nutcracker, Sony E-Center	Jerrome Robbin's West Side Story
The Camden Children's Garden, Performances and Mural Painting	

# CREATIVE ARTS HIGH SCHOOL

## DEMOGRAPHIC AND ACADEMIC CHARACTERISTICS

Our school has selected the Whole School Reform Model, High Schools That Work, because the model promotes excellence, high standards, and integrated instruction academically as well as artistically. We are preparing our students for higher education. Our students and staff work closely with Camden County College, Rutgers University, and Rowan University. Our students must take honors level English and History. During grades 11 and 12, students are given the opportunity to take courses for college credit from Camden County College. We provide students with an aggressive Language Arts Literacy program. There is an emphasis on the completion of mandatory SAT preparation courses (grades 9-11). Each student is required to read a minimum of ten novels per school year. Teachers of all disciplines work collaboratively to ensure the success of students. A Thematic Approach to instruction guarantees this success. As a result, the students of the Creative Arts High School have averaged 880 on the SAT and have an 83% passing rate on the HSPA. All incoming grade nine students must attend the Creative Arts High School summer enrichment program. Additionally, all our current grade ten students will have to attend a HSPA summer institute. Students are given varied exposures to the creative and performing arts in and out of school. Our students have been given internships in many areas of the creative and performing arts. All courses offered at the Creative Arts High School meet the New Jersey Core Curriculum Content Standards.

### **Course Offerings**

English I, II, III, IV

Vocal Music Applied I, II, III, IV

Algebra I, II

Instrumental Music Applied

Geometry

Calculus

Music History I and II

Earth Science

Art History I and II

Biology

Drama I, II, III, IV

Chemistry

Dance I, II, III, IV

Physics

Global Studies

Character Education

U.S. History I and II

Health & Physical Education

Advanced Placement - Eng. Lit.

Italian I, II, III, IV

Advanced Placement - US History SAT -

Prep (Reading & Math) History through Film

Creative Writing I

Short Story (Creative Writing II)

Play writing (Creative Writing III)

The Novel (Creative Writing IV)

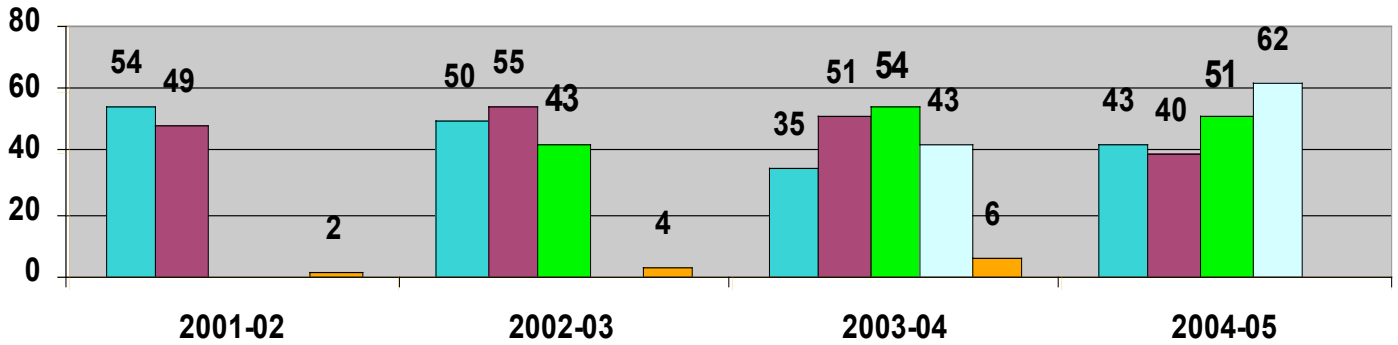
Contemporary Issues

Spanish I, II, III, and IV

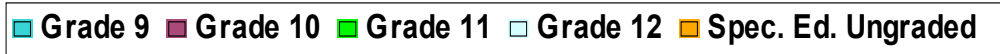
*We are committed to providing our students with an education that will enable them to be empowered to be able to go anywhere in the world and be comfortable with their skills and knowledge.*

# CREATIVE ARTS HIGH SCHOOL DEMOGRAPHIC AND ACADEMIC CHARACTERISTICS

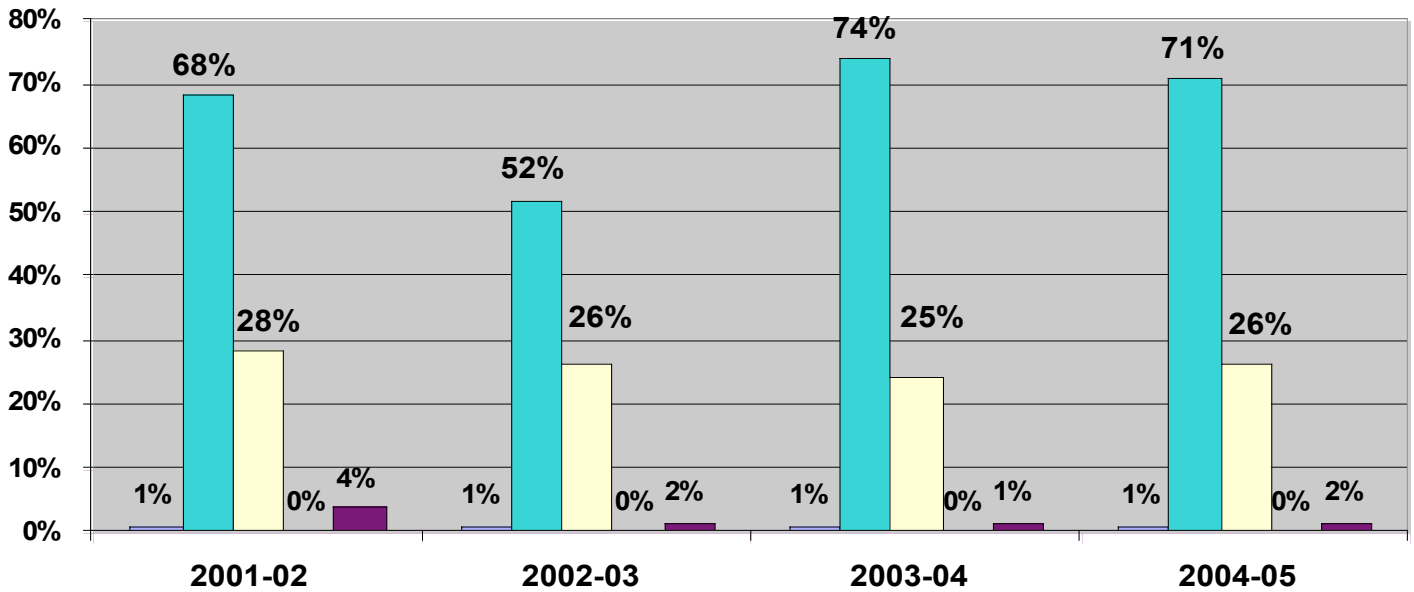
## STUDENT ENROLLMENT



The figure above reflects the count of students "on-roll" by grade in October of each year.



## STUDENT ETHNICITY

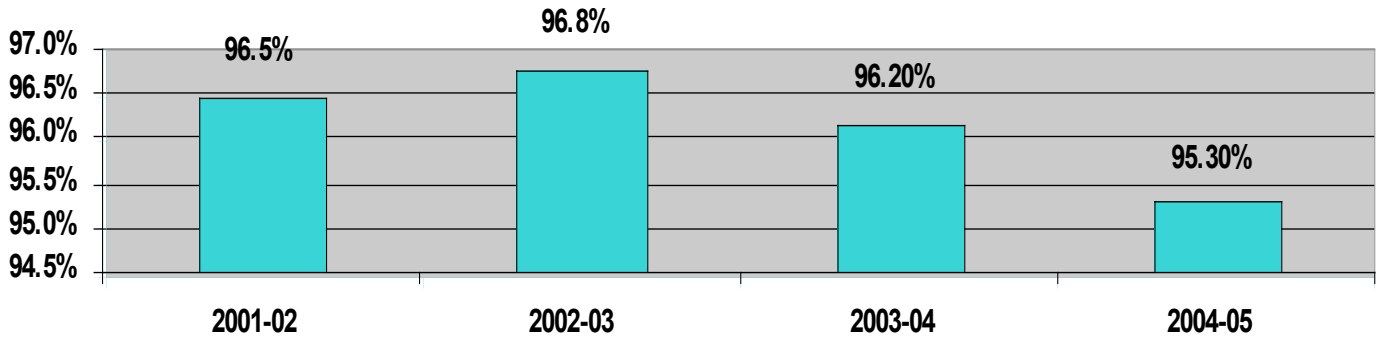


The above figure reflects the total student ethnicity for the years indicated.



# CREATIVE ARTS HIGH SCHOOL DEMOGRAPHIC AND ACADEMIC CHARACTERISTICS

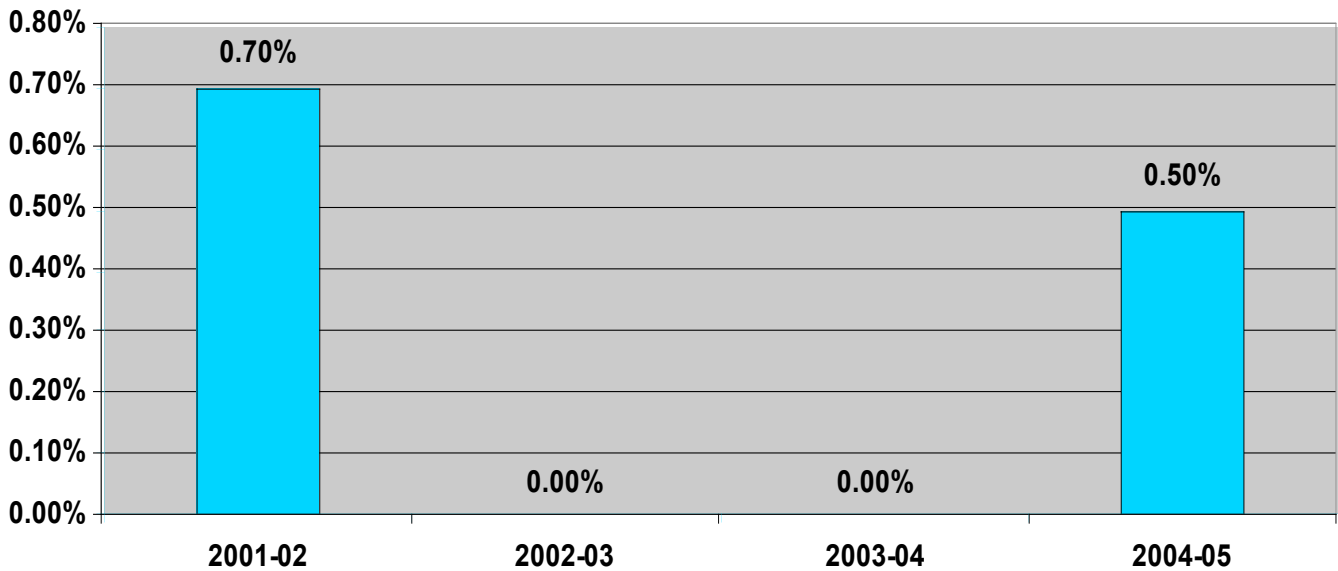
## Attendance Rates



The figure above reflects a percentage of students present on average everyday for each school year.

■ Total

## DROPOUT RATES

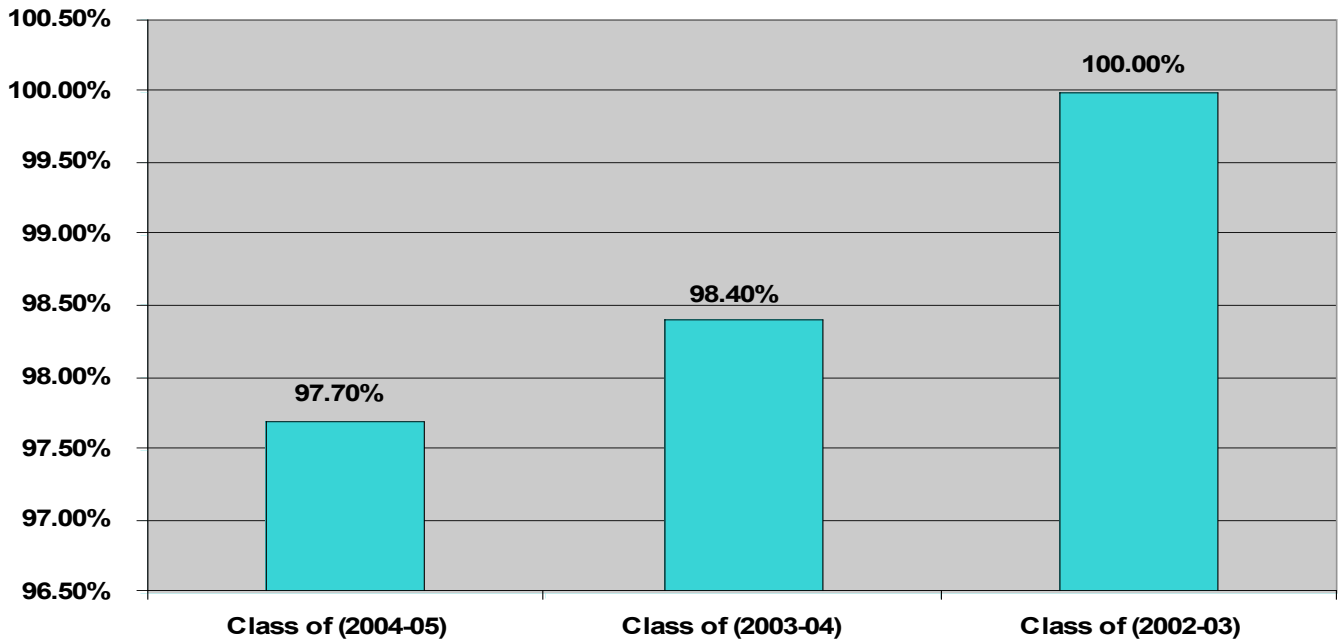


The above figure reflects the percentage of students in grades 9-12 who dropped out during the school years indicated.

■ Total

# CREATIVE ARTS HIGH SCHOOL DEMOGRAPHIC AND ACADEMIC CHARACTERISTICS

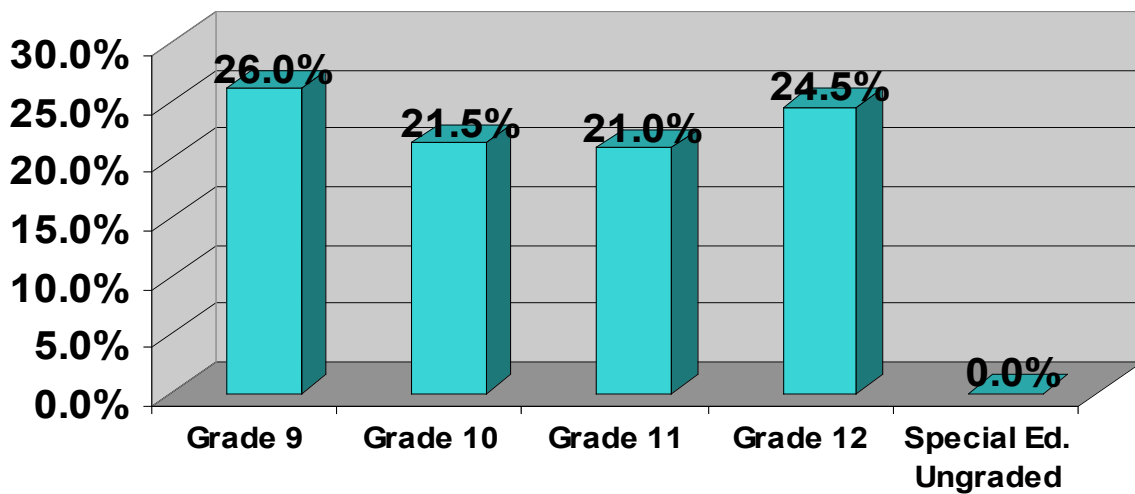
## STUDENT GRADUATION RATE



The above figure reflects the student graduation rate for each year indicated.

■ Total

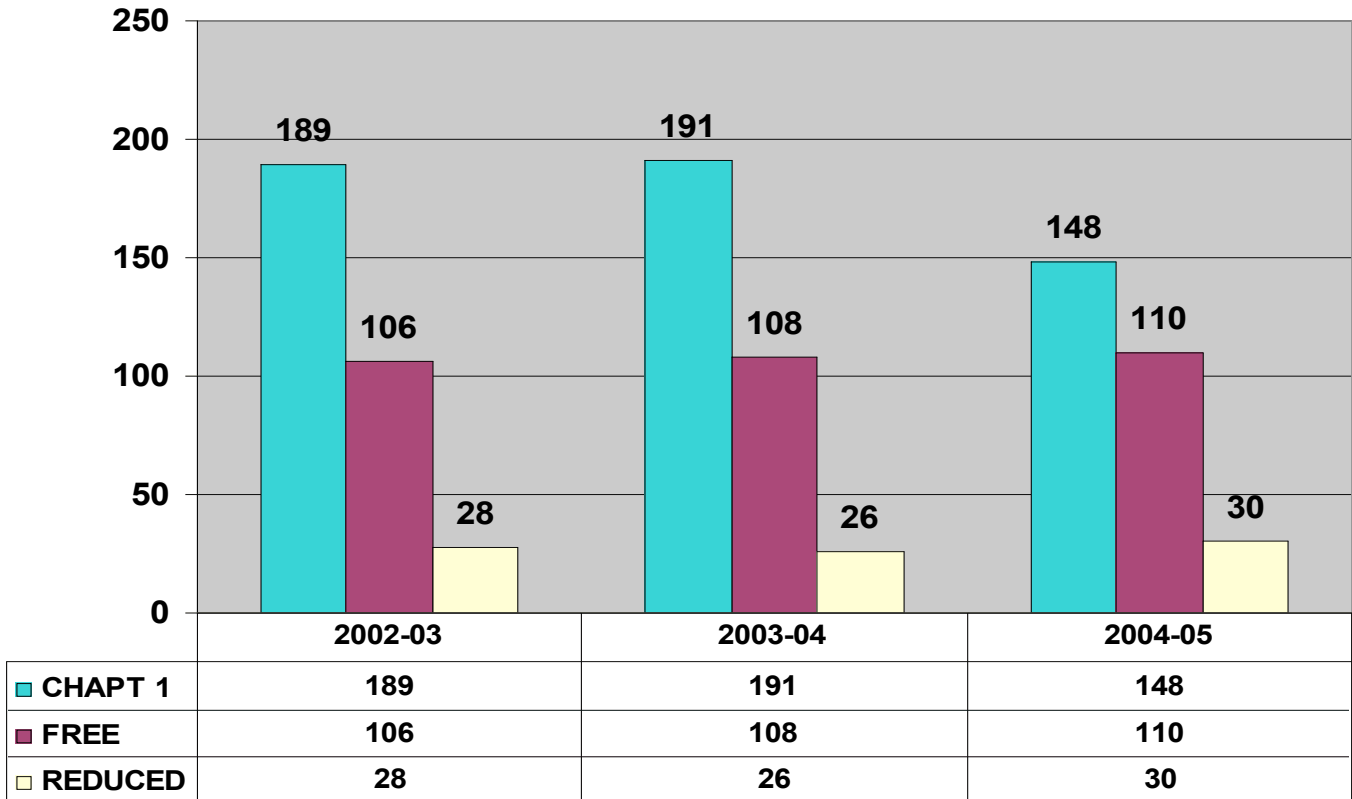
## AVERAGE STUDENT CLASS SIZE



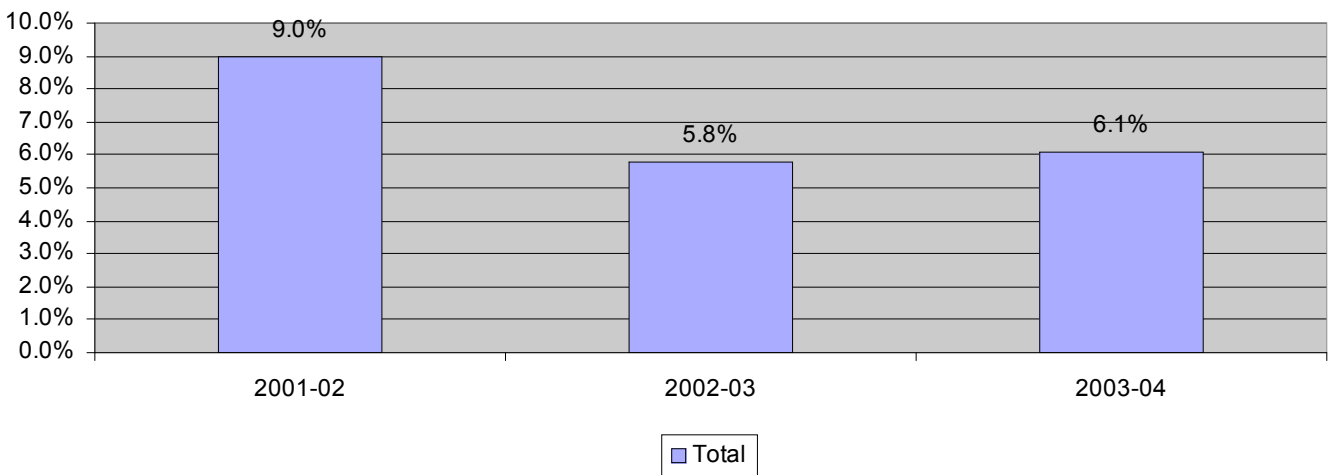
■ Totals

# CREATIVE ARTS HIGH SCHOOL DEMOGRAPHIC AND ACADEMIC CHARACTERISTICS

## FREE/REDUCED LUNCH

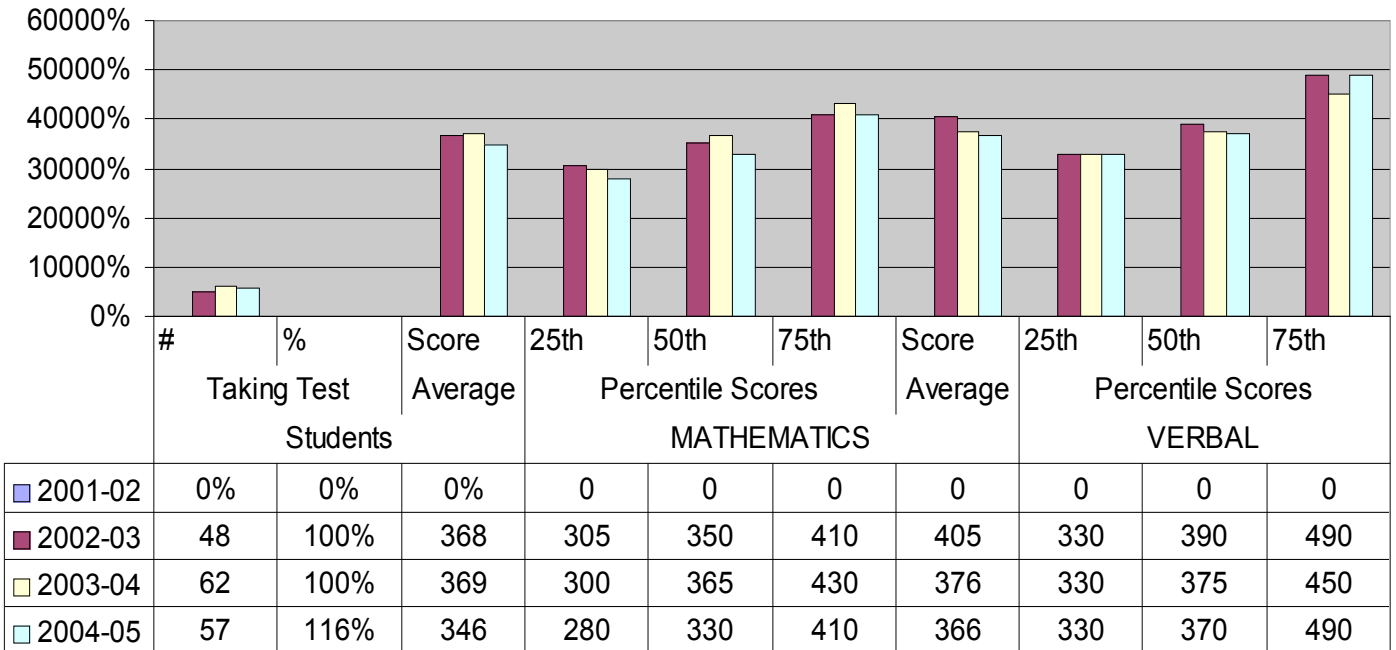


## STUDENT MOBILITY



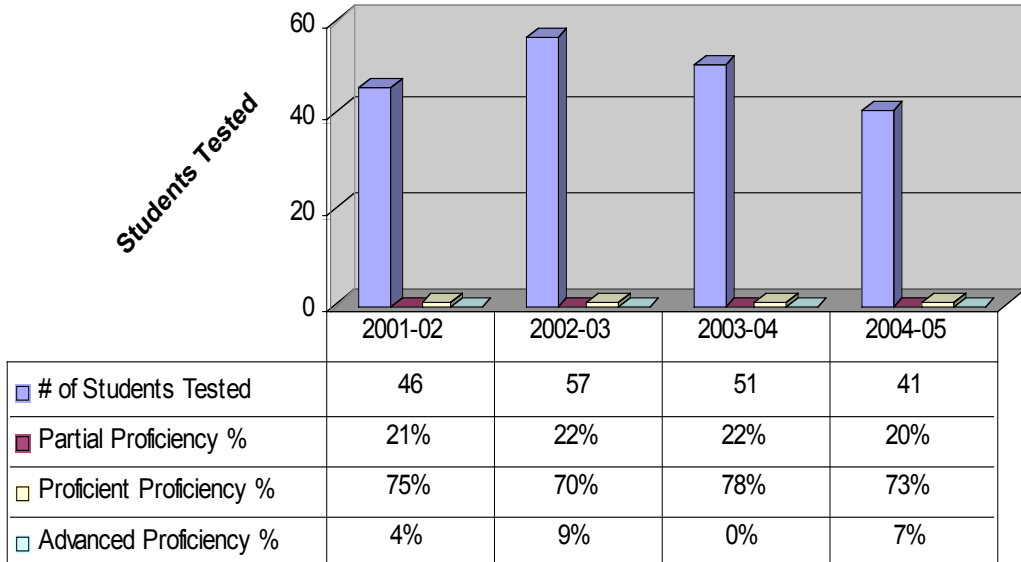
**CREATIVE ARTS HIGH SCHOOL  
DEMOGRAPHIC AND ACADEMIC CHARACTERISTICS**

**SCHOLASTIC ASSESSMENT TEST (SAT) RESULTS  
MATHEMATICS AND VERBAL**

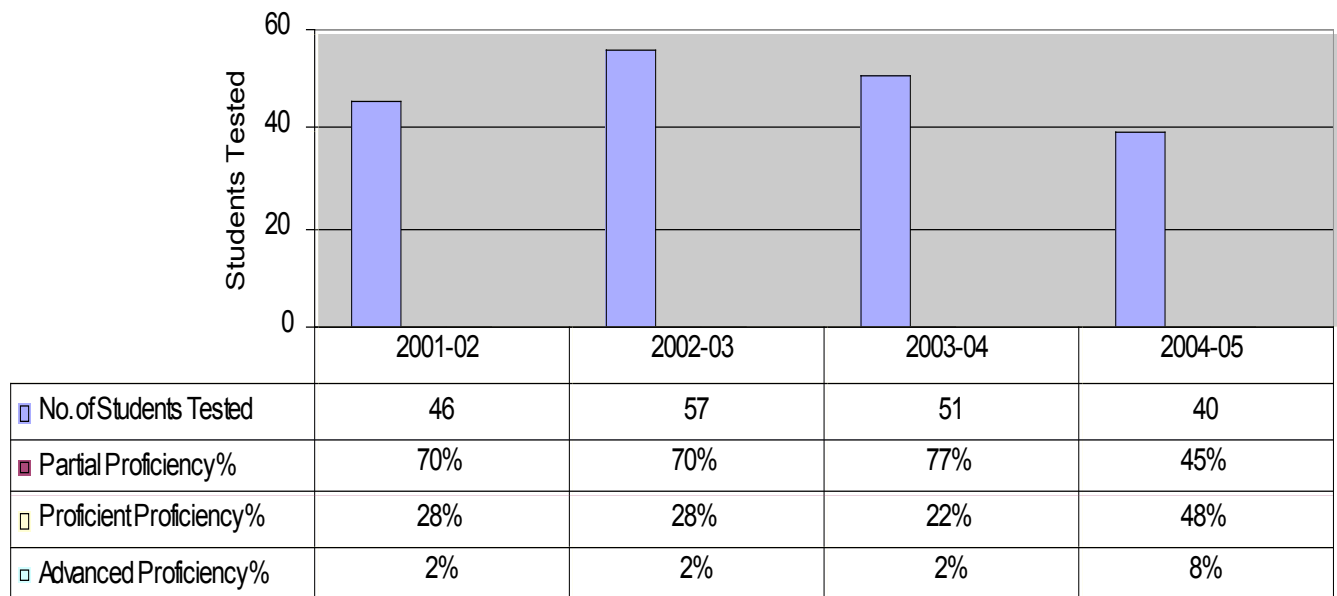


# CREATIVE ARTS HIGH SCHOOL DEMOGRAPHIC AND ACADEMIC CHARACTERISTICS

## HIGH SCHOOL PROFICIENCY ASSESSMENT (HSPA) LANGUAGE ARTS LITERACY



## HIGH SCHOOL PROFICIENCY ASSESSMENT (HSPA) MATHEMATICS

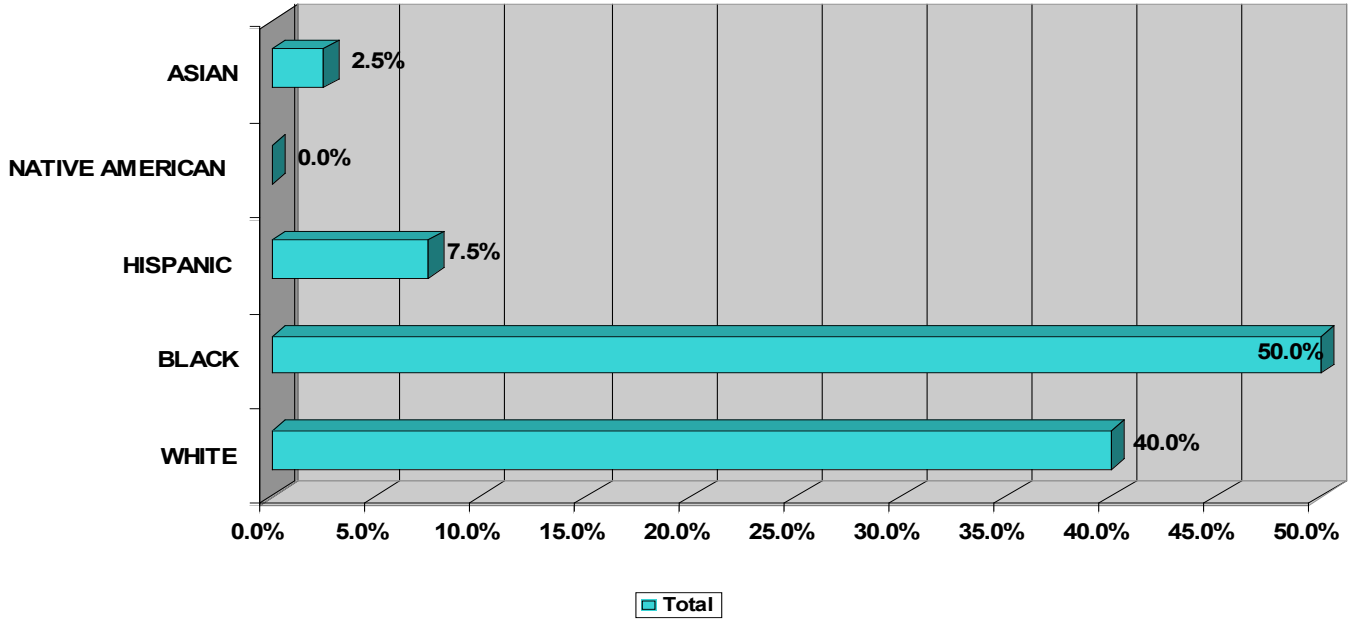




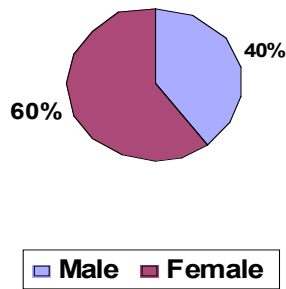
# CREATIVE ARTS HIGH SCHOOL DEMOGRAPHIC AND ACADEMIC CHARACTERISTICS



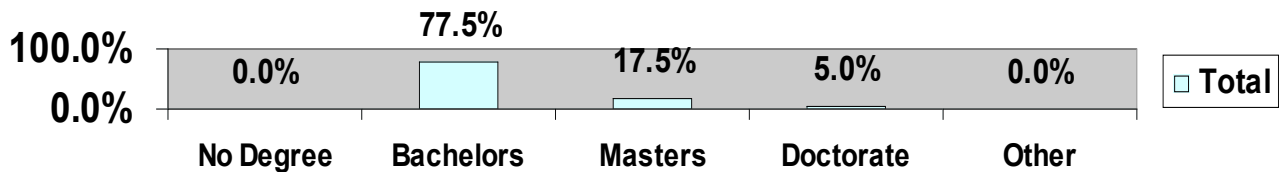
## INSTRUCTIONAL STAFF ETHNICITY



## INSTRUCTIONAL STAFF GENDER AS OF OCTOBER 15, 2004



## INSTRUCTIONAL STAFF DEGREES



The figure above reflects Certificated Staff as of October 15, 2004.

**CREATIVE ARTS HIGH SCHOOL  
DEMOGRAPHIC AND ACADEMIC CHARACTERISTICS**